

Be-Ge 8652/8653.1/HBC

The seats illustrated is fitted with extra items



8653.1HBC, the driver seat with 3-point belt and integrated head support.



The very popular bus seat 8652 with the accessories armrest and head rest.



Standard equipment is with Rotolift - a shock and damping base, height adjustable and rotation through both directions.

BE-GE 8652 / 8653.1 / HBC are static driver seats suitable for e.g. buses and railway traffic. The basic model 8652 has a generous height adjustment of the backrest cushion, which is done with single lever, and length adjustment of the seat cushion. The lumbar support is infinitely adjustable, which provides a constant softness even when adjusted to its max point.

8653.1 have on top of the basic features a 3-point belt on the right or left hand side and a specially adapted Rotolift. This driver seat has been tested and approved according to 76/115/EEC.

HBC-variant is with high backrest and integrated head support. This will give a complete support for the whole back, from the pelvis to the neck. This high back can be equipped on both 8652 and 8653.1.

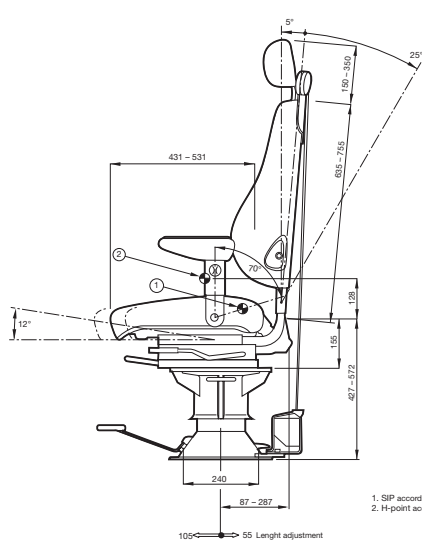
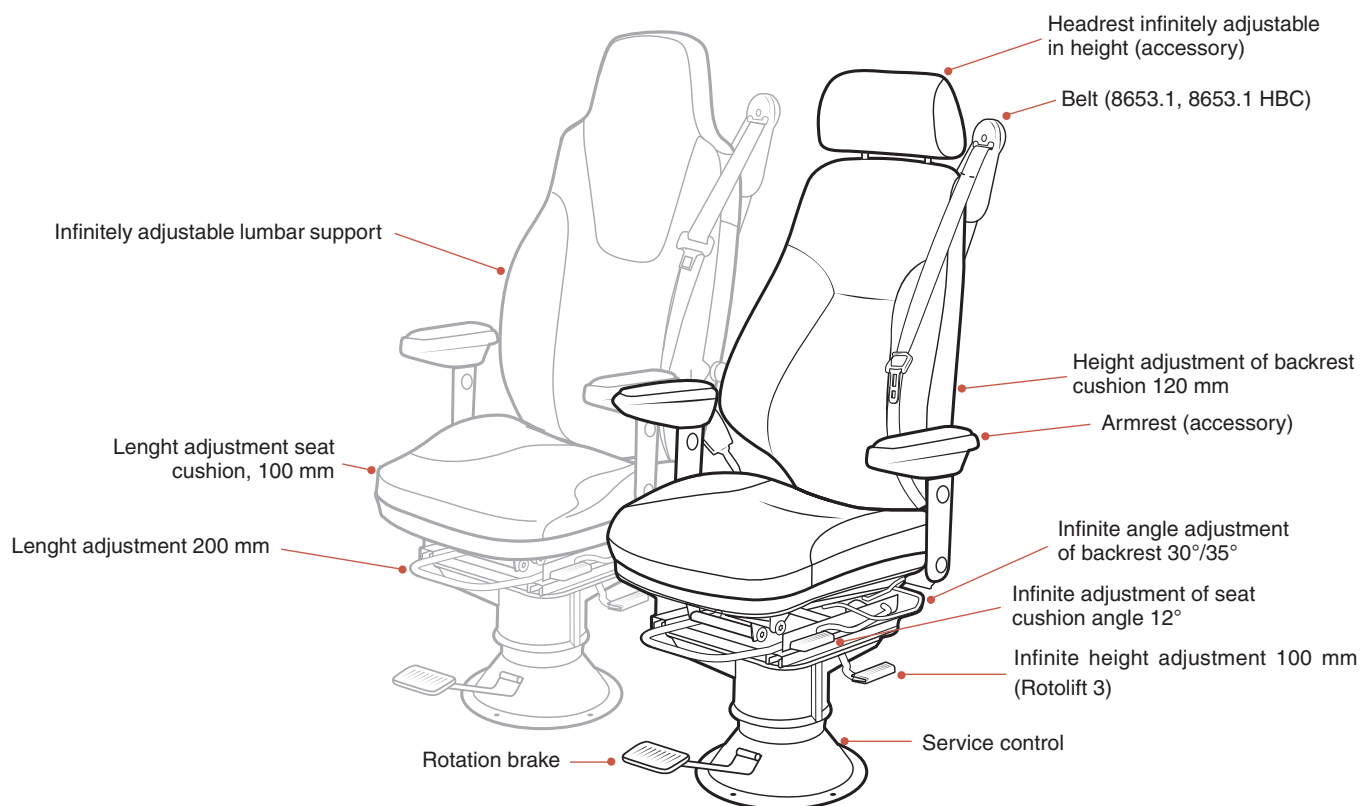
Accessories like armrest, head rest, Be-Ge's well known "Airvent", electrical heating, different kinds of turning devices etc are some of the equipments that makes the seat designed for each need.

BE-GE, the name means a great deal: not at least comfort and quality, both physical and technical.

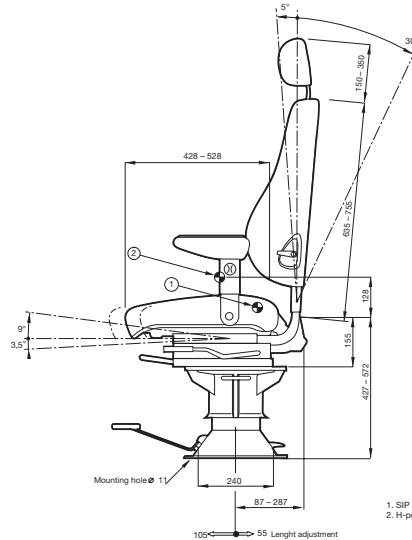
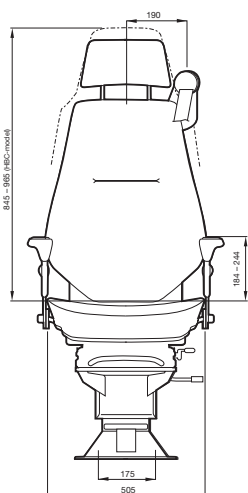
BE - GE

— Establ. 1934 —

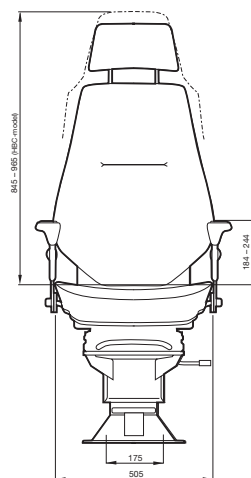
Be-Ge 8652/8653.1/HBC



1. SIP according to SS-ISO 5353
2. H-point according to ISO 6549



1. SIP according to SS-ISO 5353
2. H-point according to ISO 6549



Be-Ge Industri AB

Box 912 SE-572 29 Oskarshamn, Sweden. Telephone +46 (0)491-761800. Telefax +46 (0)491-81900.
info@be-ge.se www.be-ge.com

